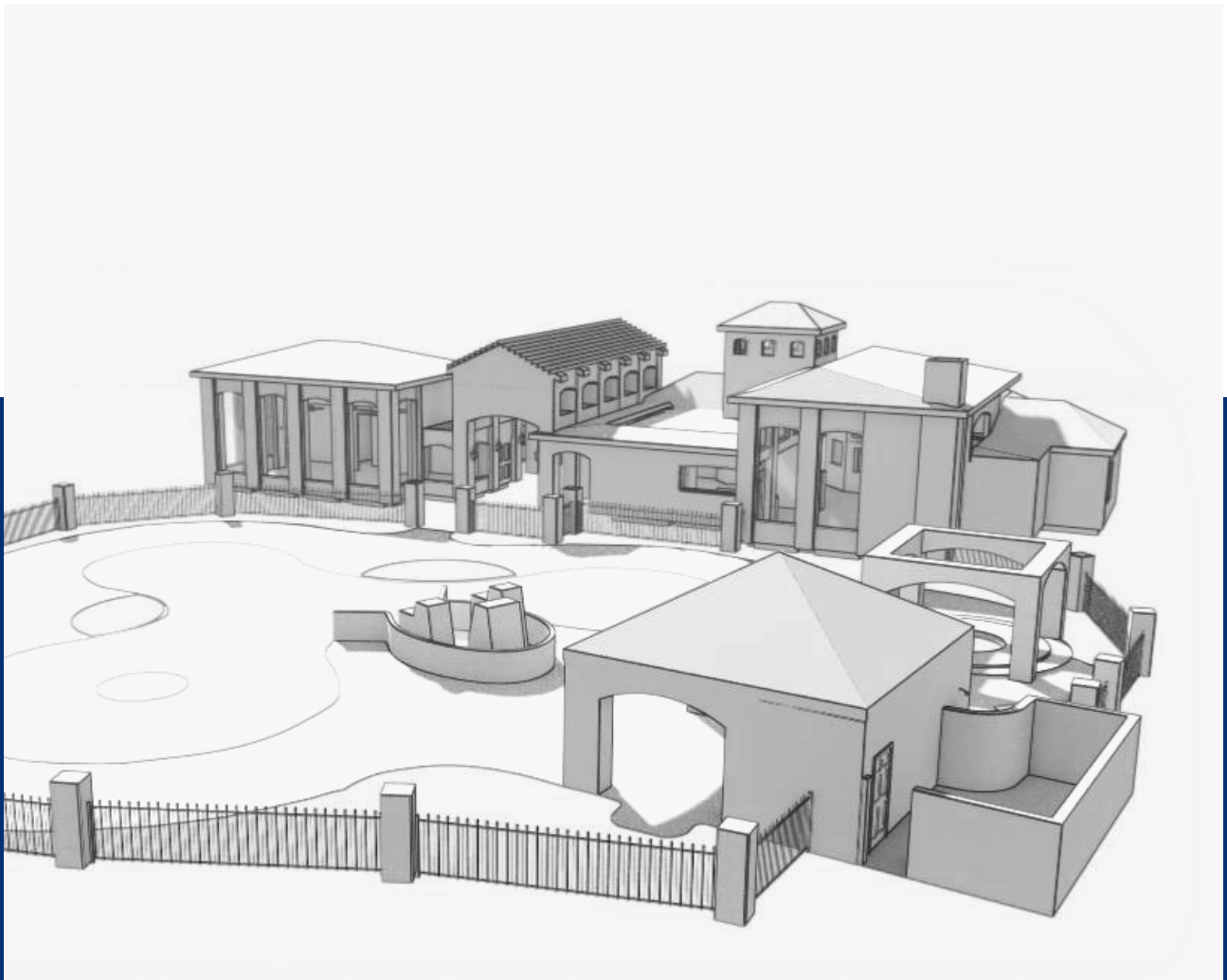


PORTFOLIO

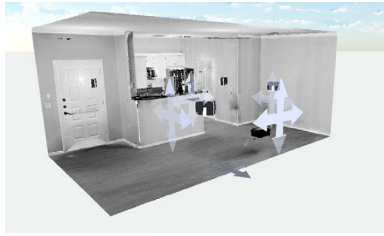
AS-BUILT





Cortland Design is an interior and architectural design firm that creates with a boldly independent spirit and a genuine eye for value. We're best known for multifamily, hospitality, commercial, 55+ active adult living, and residential design. We are experts in design technology servicing the architecture, engineering and construction industry. We created this portfolio to showcase some of our scan to BIM projects led by our in-house Building Information Modeling team.

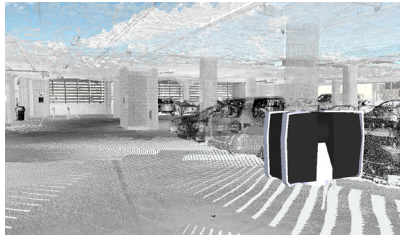
C O N T E N T S



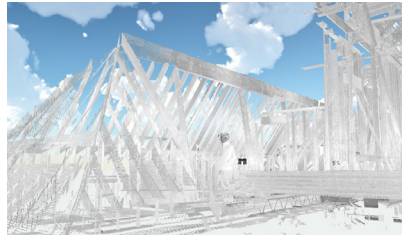
4 PINNACLE AT
UNION HILLS



8 SAN BRISAS



14 CORTLAND AT
PHIPPS - PARKING
GARAGE



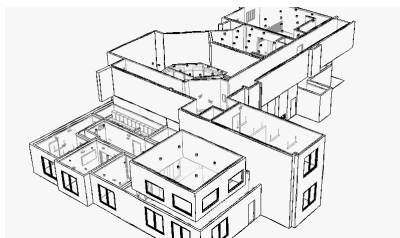
18 RESIDENTIAL
HOME



22 THE BROOKE



12 VILLAGE AT
EAST FARMS

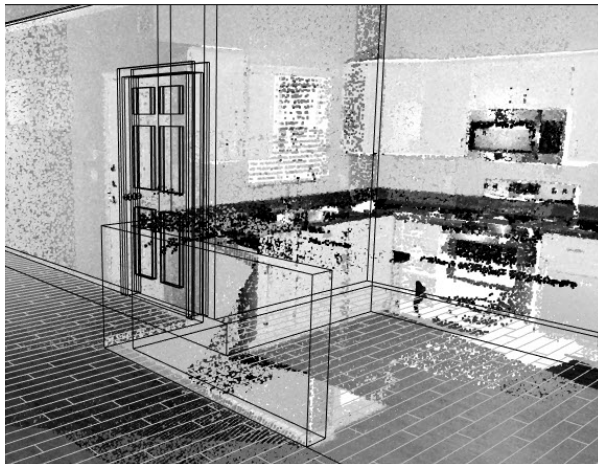


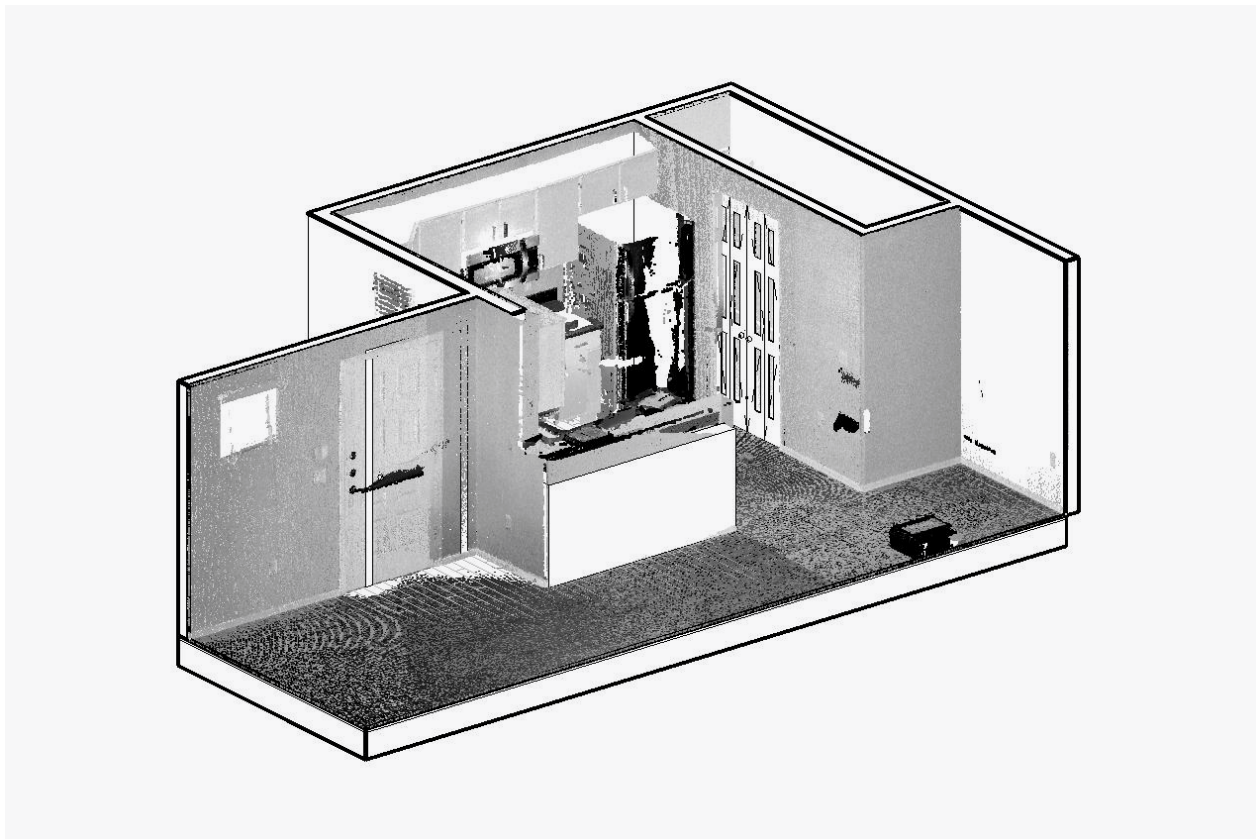
26 AMALFI
STONEBRIAR

PINNACLE AT UNION HILLS

PHOENIX, ARIZONA

Our BIM team led the scanning of two pool areas, the main clubhouse, leasing center and three different apartment unit types. We modeled three unit types in Revit as 3D models and delivered them to our interior designers to begin renovations. The clubhouse, pool and leasing spaces were also modeled and handed off to our architecture and pre-construction teams for quantity take-offs and renovation work.



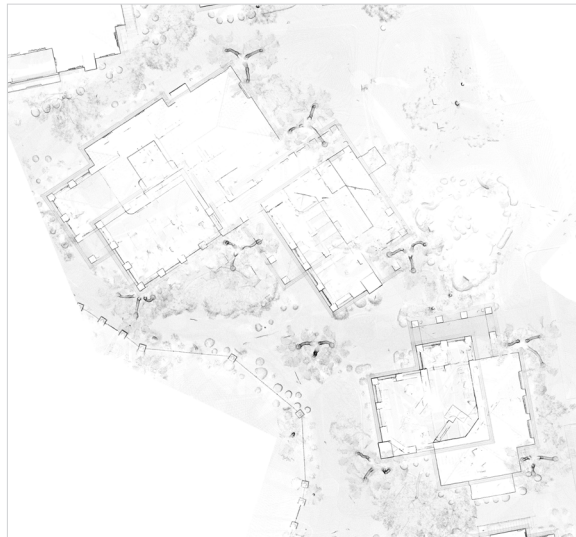


SAN BRISAS

CHANDLER, ARIZONA

Our BIM managers at Cortland Design scanned the clubhouse, fitness area and pool, along with five apartment unit types. We successfully delivered each space as 3D models to our client to help plan for architectural renovations.

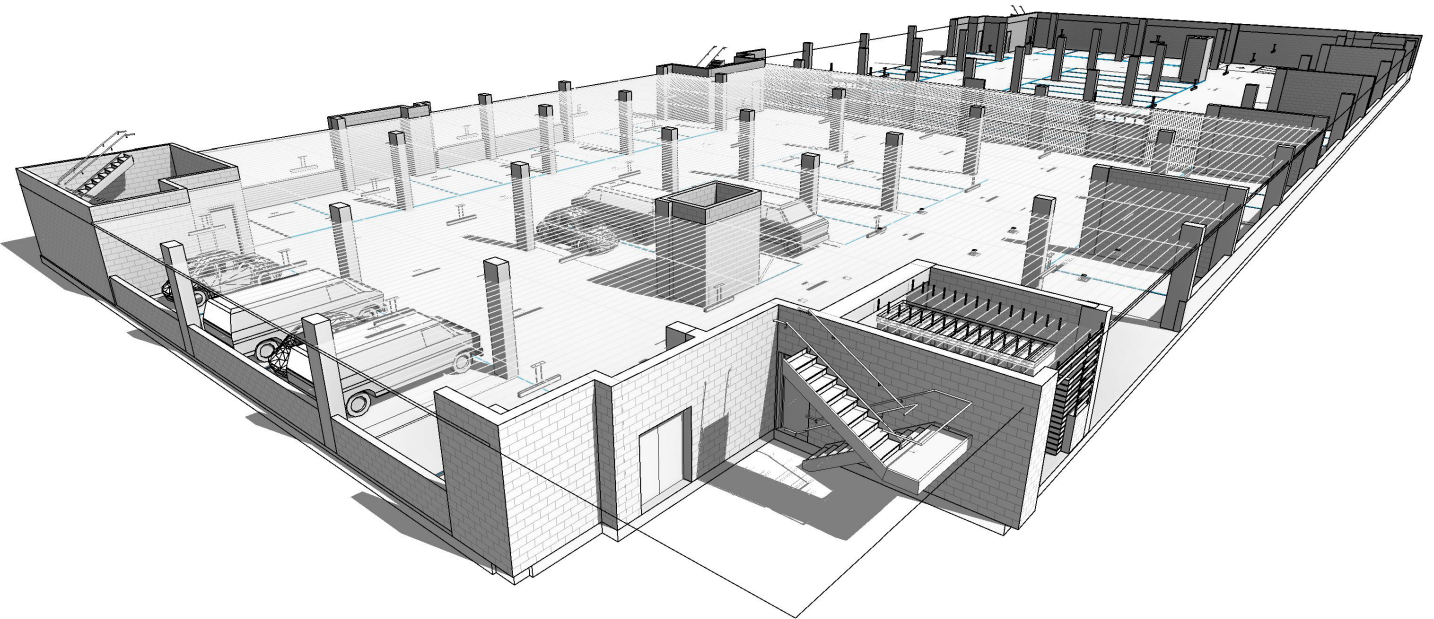


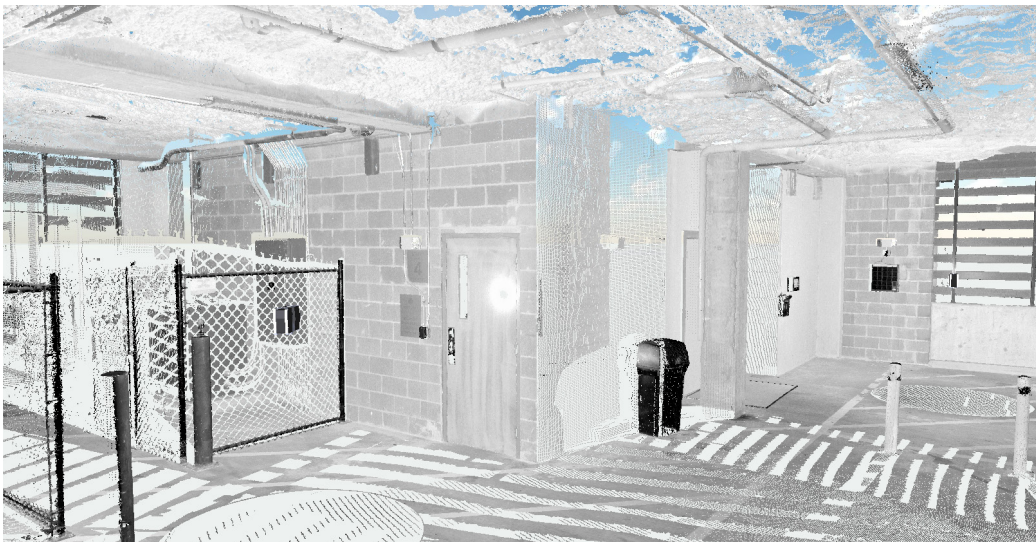
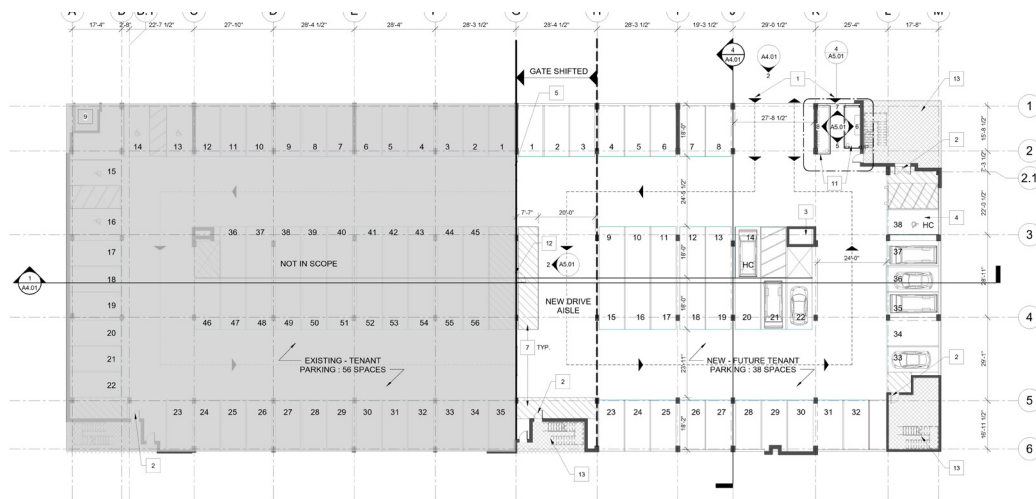
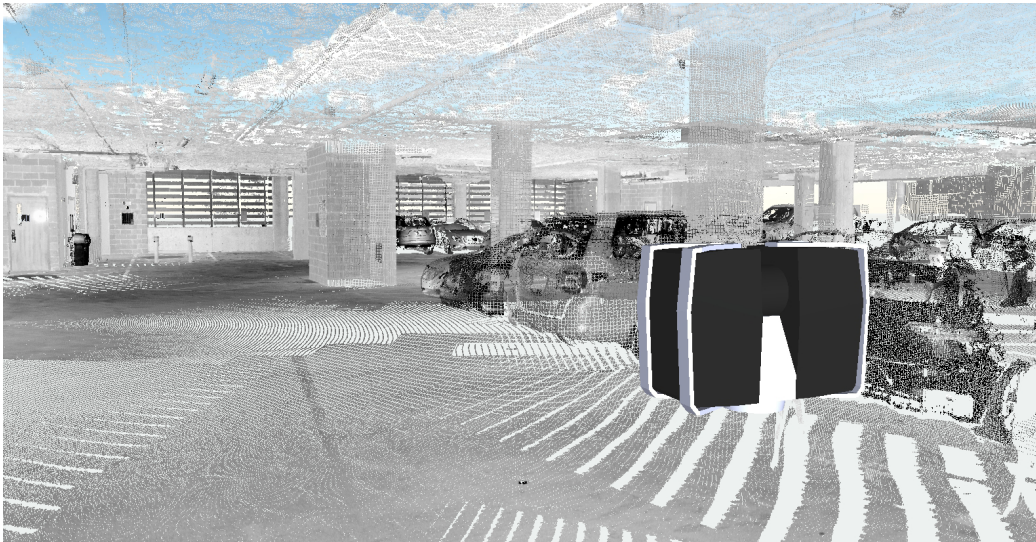


CORTLAND AT PHIPPS PARKING GARAGE

ATLANTA, GEORGIA

For this project, we accurately scanned a commercial parking garage and delivered the scans as a point cloud to the project architect for the purpose of extrapolating measurements for a redesign.

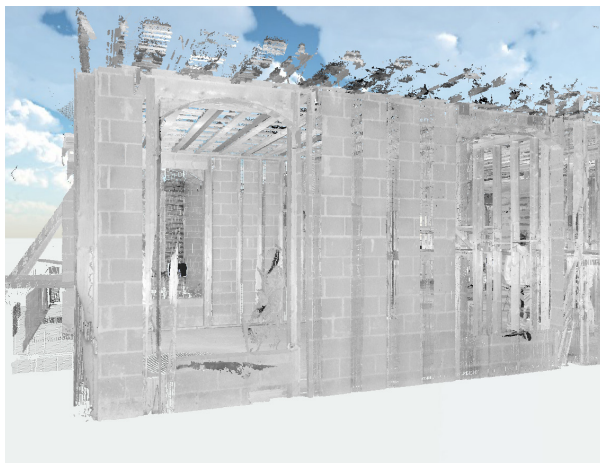
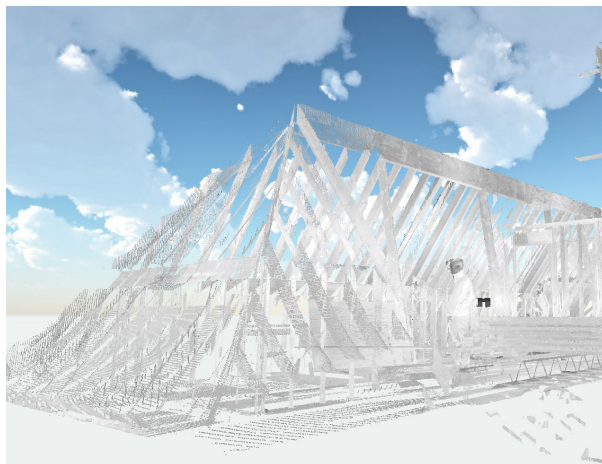


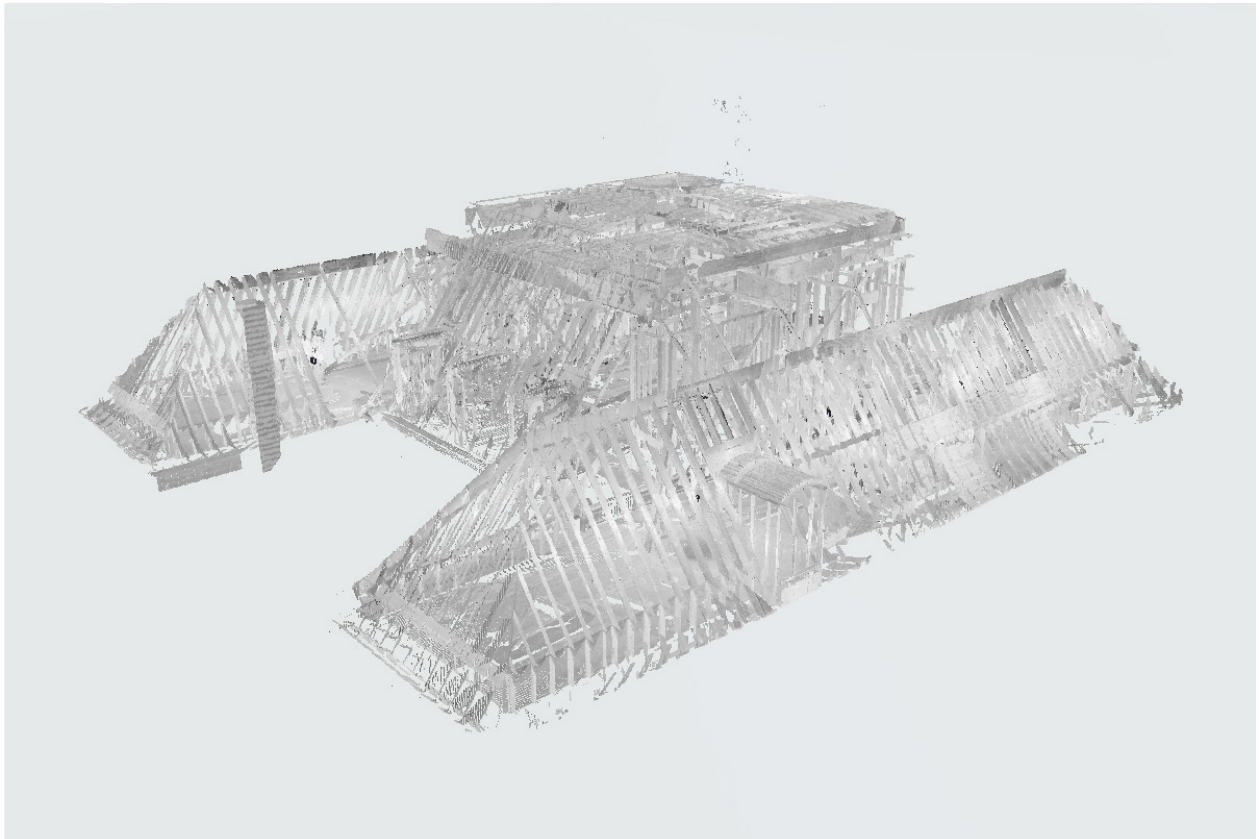
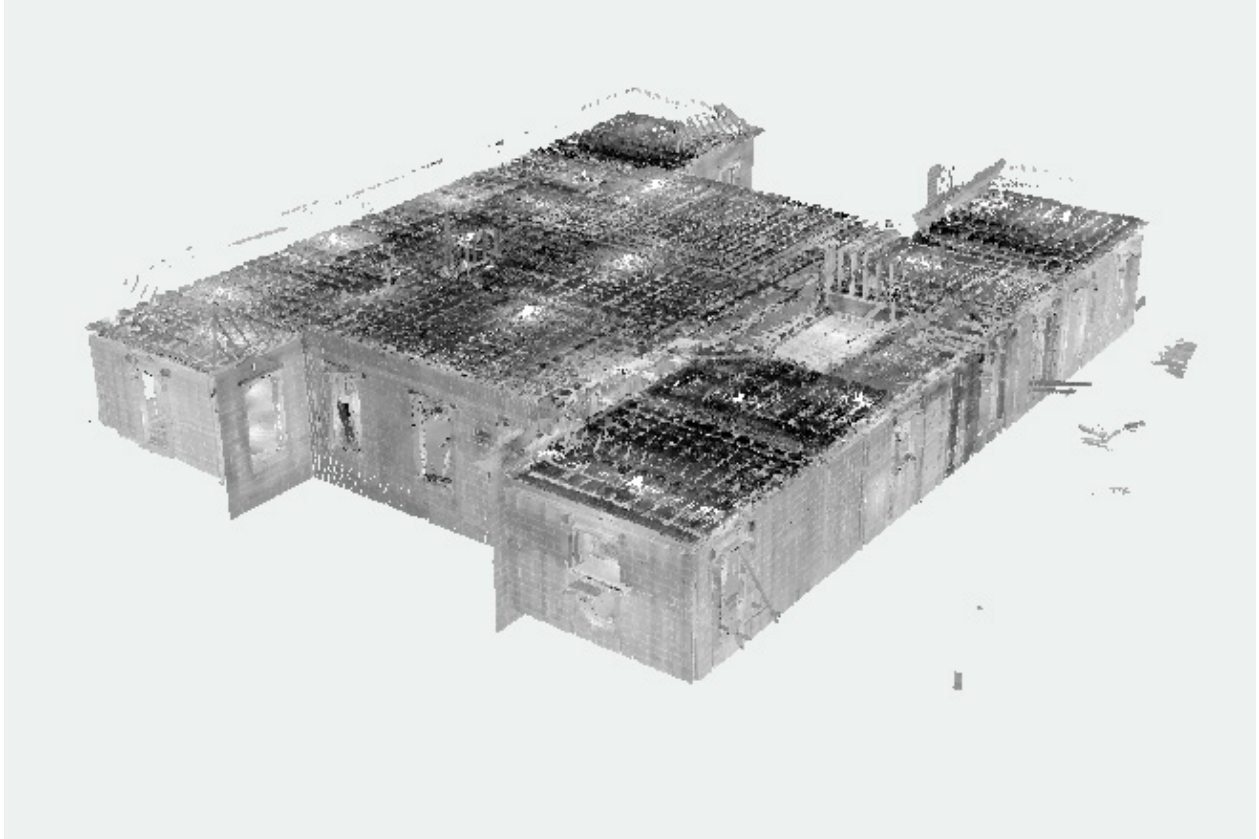


RESIDENTIAL HOME

ATLANTA, GEORGIA

At this private residence, our team recommended scanning the home during the construction process in order to verify the design drawings with what was being built on-site. We were able to successfully provide detailed drawings to our client for confirmation. The homeowner was looking to verify accuracy before the project was near completion.

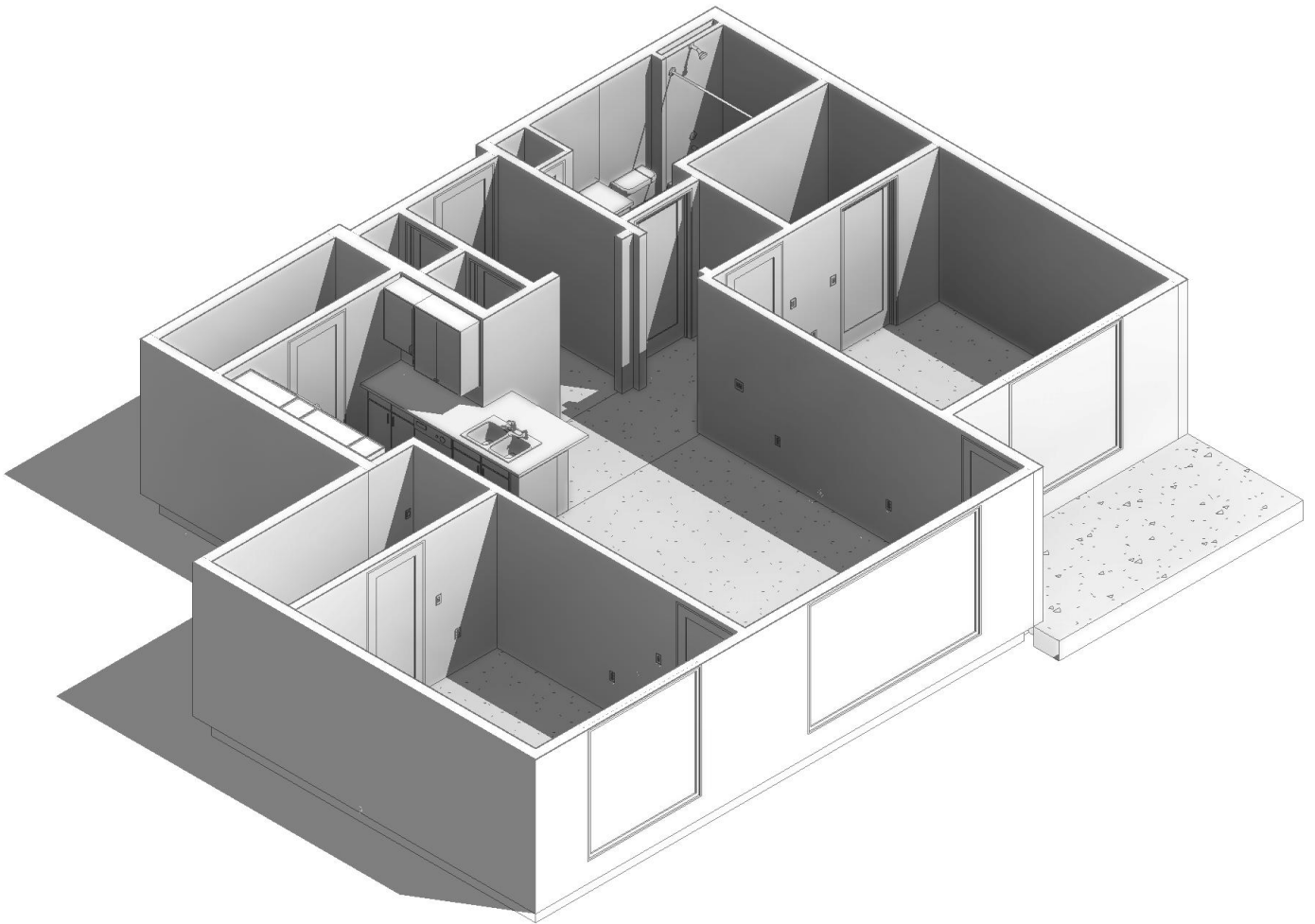


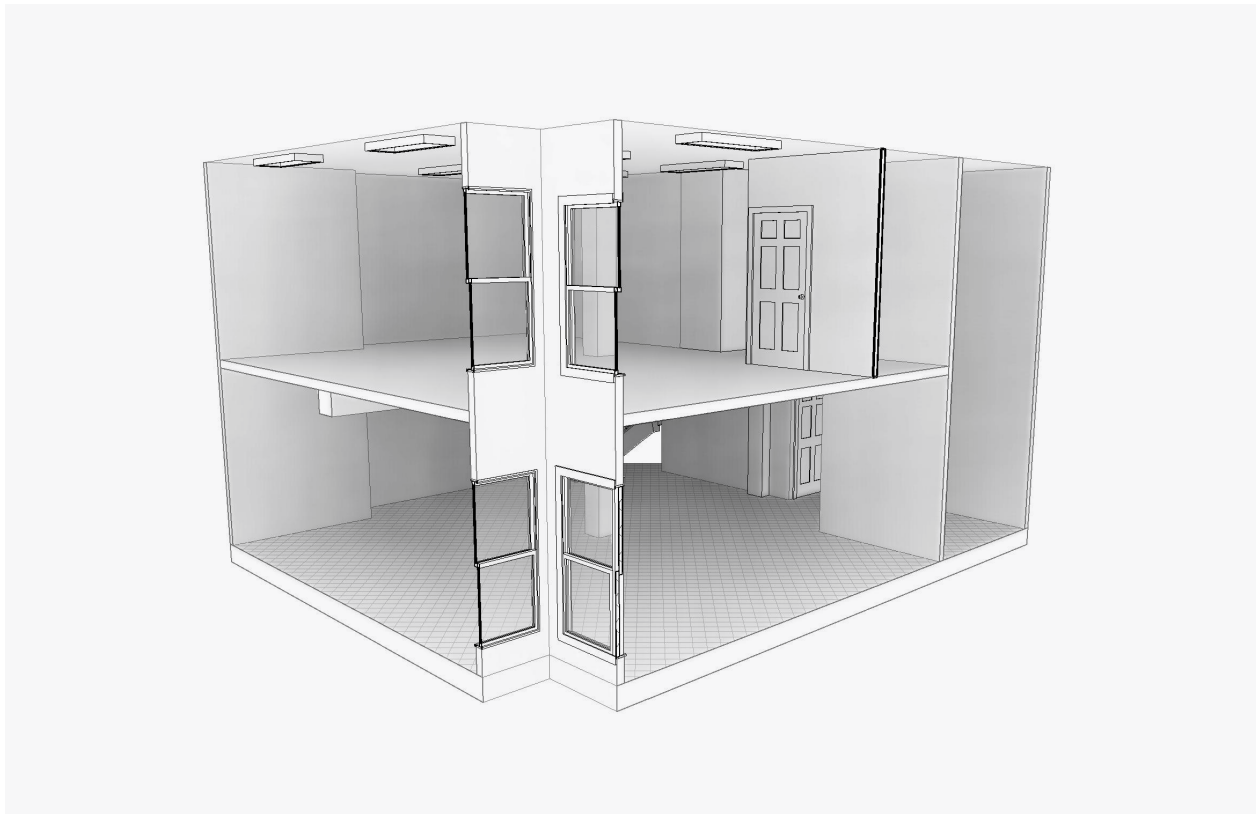
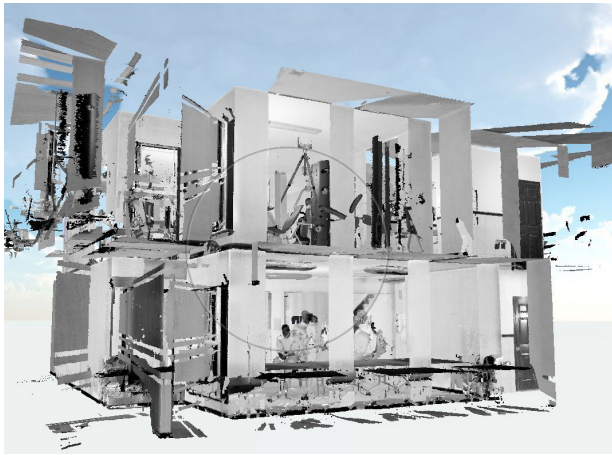


THE BROOKE

ATLANTA, GEORGIA

Our BIM team led the scanning of twenty apartment unit types and four common spaces at this multifamily community. The purpose of the project was to complete renovations on each unit type and do a full redesign of the four common areas.



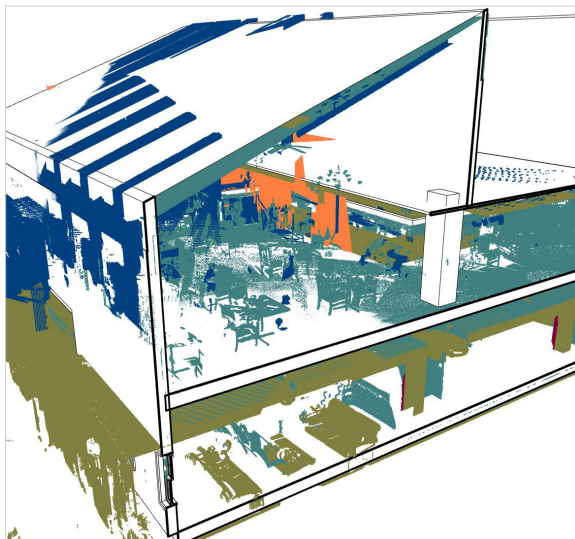


VILLAGE AT EAST FARMS

WATERBURY, CONNECTICUT

For this project, our team scanned corridors for two assisted living buildings including all existing unit types that were on-site. We delivered 3D models to include on the website as well as for use before and during renovations.

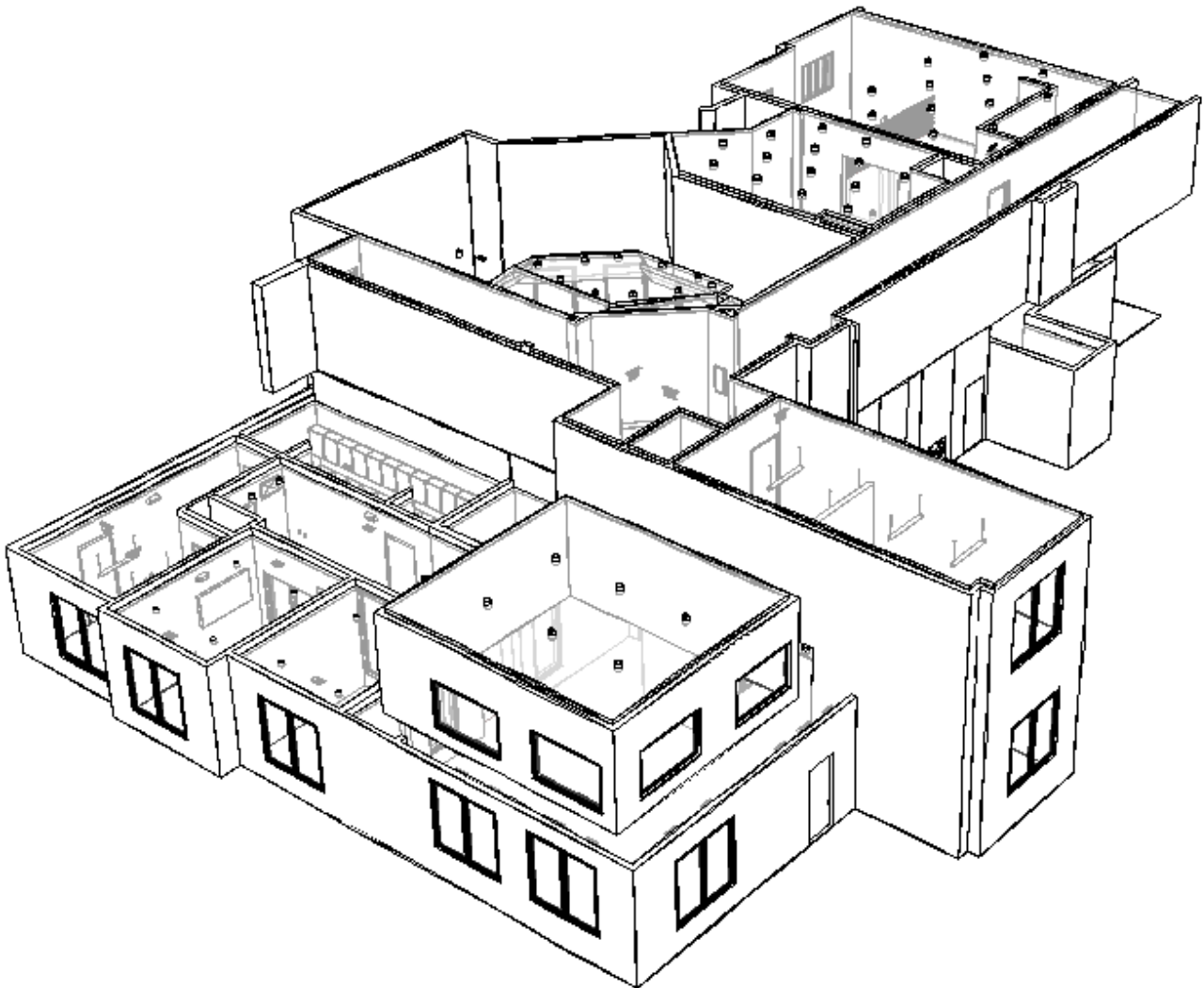


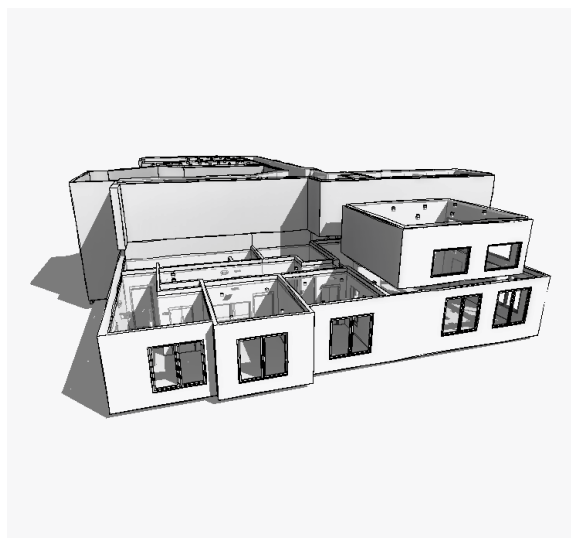
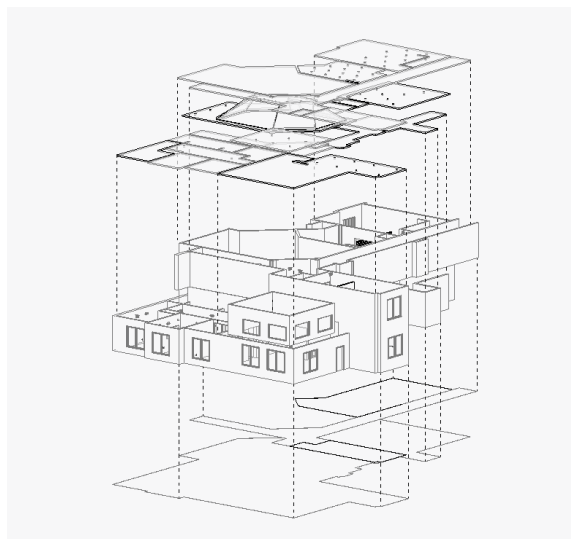
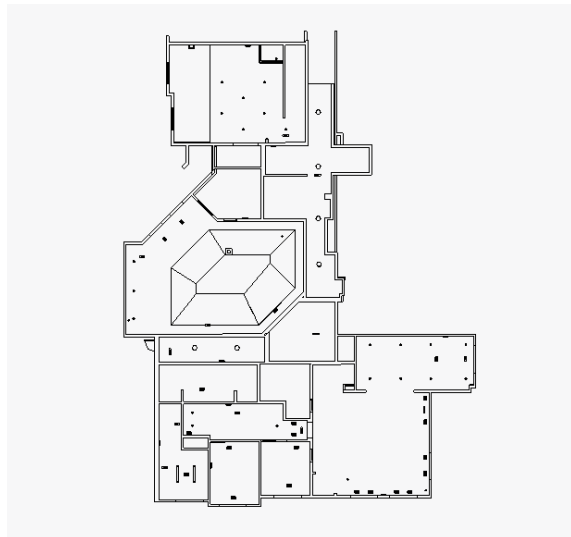


AMALFI STONEBRIAR

DALLAS, TEXAS

At this multifamily community, our BIM managers at Cortland Design accessed the site to scan the community space. After scanning, we created a model based on the data captured within point cloud for our architecture teams to use as a design reference to begin renovation work.







GEORGIA

3424 Peachtree Rd. NE, STE. 300
Atlanta, GA 30326

TEXAS

14675 Dallas Parkway, STE. 550
Addison, TX 75254



**GET AN INSIDE LOOK
OF OUR FEATURED
COVER PROJECT BY
SCANNING OR TAPPING
THE QR CODE**